

FDZNAUX1



Purpose

The SoundGate FDZNAUX1 lets you connect a Zune™ digital media player directly to the factory radio in the vehicles listed below. The FDZNAUX1 supplies power, charges your Zune device, and allows for remote control of all Zune device functions (remote sold separately).



Features

The SoundGate FDZNAUX1 utilizes sophisticated microprocessor control, ultra-reliable surface-mount construction, and advanced software design to flawlessly integrate with factory audio systems. Your Zune device's audio can be selected from your factory radio's controls.

The FDZNAUX1 works in the following vehicles:

VEHICLE	YEAR	AUDIO SYSTEM	USE INCLUDED HARNESS OPTION:
FORD			
Crown Victoria	2003–05	CD capable	Harness C
Expedition ¹	2003–05	CD capable	Harness C
Explorer ¹	2004–05	CD capable	Harness C
Focus	2000–04	CD capable	Harness B
Freestar	2004–05	CD capable	Harness C
Windstar	2003–05	CD capable	Harness C
LINCOLN			
Aviator ¹	2003–05	"Premium" system	Harness C
Blackwood ²	2002	See note ² below	Harness A
Navigator ¹	2003–04	CD capable	Harness C
Town Car	2003–05	CD capable	Harness C
MERCURY			
Cougar	1998–03	CD capable	Harness B
Grand Marquis	2003–05	CD capable	Harness C
Mountaineer	2004	"Premium" system	Harness C
JAGUAR			
S-Type	1999–01	CD capable	Harness B
S-Type ²	2002	See note ² below	Harness A

¹Vehicle cannot be equipped with rear seat entertainment package.
²Vehicle must be pre-wired for a factory CD changer.

Note: the FDZNAUX1 is **NOT** compatible with factory audio systems that are satellite-radio-ready.

Simple-fi.™

www.soundgate.com

Rev 20080404

If you experience problems, call SoundGate Technical Support at +1-800-256-0808, or email us at sgtech@soundgate.com.

WARNING

DO NOT DISASSEMBLE OR ALTER

Doing so may result in an accident, fire, or electric shock.

Do not block your view

Do not mount product or any added audio/video equipment where it can block your view through the windshield or block your view of dashboard indicators and displays.

Do not block safety devices

Do not mount product or any added audio/video equipment where it can obstruct the operation of any safety device, such as the airbag.

Distraction warning

Do not allow product or any added audio/video equipment to distract you while you are driving.

BEFORE WIRING, DISCONNECT THE CABLE FROM THE NEGATIVE BATTERY TERMINAL

Before starting any installation work, wait 90 seconds after turning the ignition switch to the LOCK position and disconnecting the negative (-) terminal from the battery. The supplemental restraint system (SRS), or airbag(s) is equipped with a backup power source. If installation work is started less than 90 seconds after disconnection of the negative (-) battery terminal, the SRS may deploy. When the negative (-) terminal cable is disconnected from the battery, the clock and audio systems' memory may be erased. Before starting installation work, make a record of the clock and audio systems' memory settings. When installation is complete, reset the clock and audio systems to their previous settings. Power tilt, power telescopic steering column, power seats, power mirrors, power shoulder belt anchorage, and other power accessories may or may not be equipped with a memory function; consider keeping a record of these settings as well.

When installation is complete, readjust the features to their previous settings.

Never use a backup power supply (such as another battery) during installation work in an attempt to avoid losing these memory settings.

CAUTION

DO NOT ALLOW CABLES TO BECOME ENTANGLED IN SURROUNDING OBJECTS

Cables or wiring that obstruct or get caught on places such as the steering wheel, shift lever, brake pedals, etc. can be extremely hazardous.

DO NOT INSTALL IN LOCATIONS WITH HIGH MOISTURE OR DUST

Moisture or dust may result in product failure.

HAVE THE WIRING AND INSTALLATION DONE BY EXPERTS

The wiring and installation of this product requires special technical skills and experience.

USE ONLY SPECIFIED ACCESSORY PARTS

Use of other than specified parts may damage product internally.

FOLLOW THE OPERATIONAL AND INSTALLATION MANUALS.

YOU SHOULD READ AND FAMILIARIZE YOURSELF THOROUGHLY WITH THE FOLLOWING INFORMATION PRIOR TO INSTALLING AND USING THIS UNIT. IN ADDITION, YOU MUST CAREFULLY READ AND FOLLOW THE INSTALLATION SCHEMATICS AND INSTRUCTIONS FOR THE PRODUCT AND THE VEHICLE IN WHICH IT IS BEING INSTALLED. FAILURE TO FOLLOW INSTALLATION INSTRUCTIONS MAY DAMAGE THE PRODUCT AND THE VEHICLE, WILL VOID THE PRODUCT WARRANTY, AND MAY VOID THE VEHICLE WARRANTY.

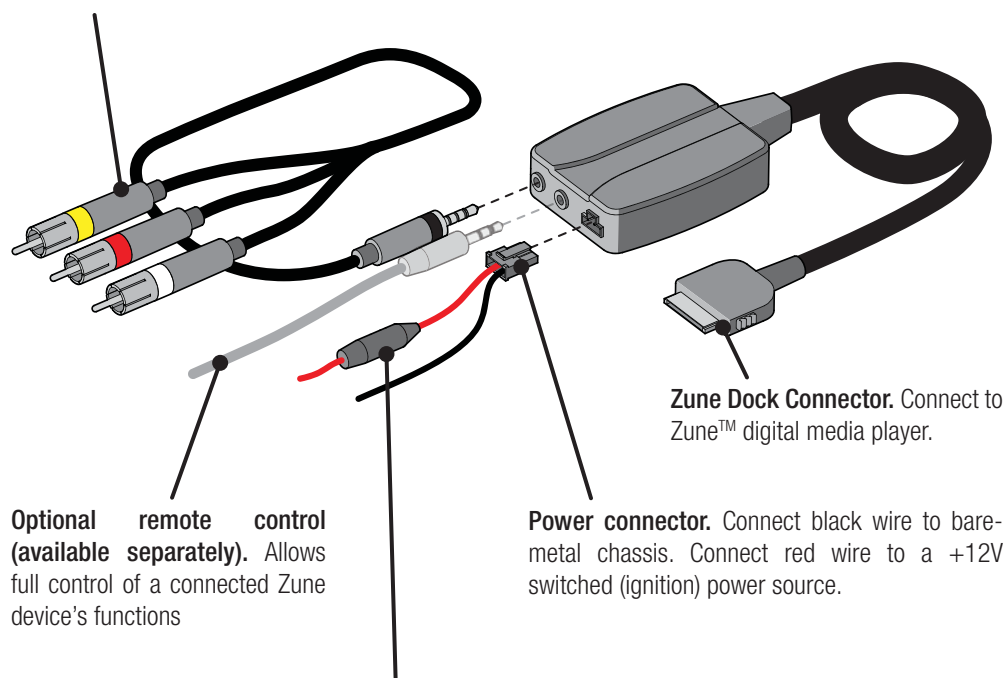
TROUBLESHOOTING

Should this product fail to operate properly, please contact your Dealer or SoundGate Technical Support via email at sgtech@soundgate.com or via phone at +1-800-256-0808.

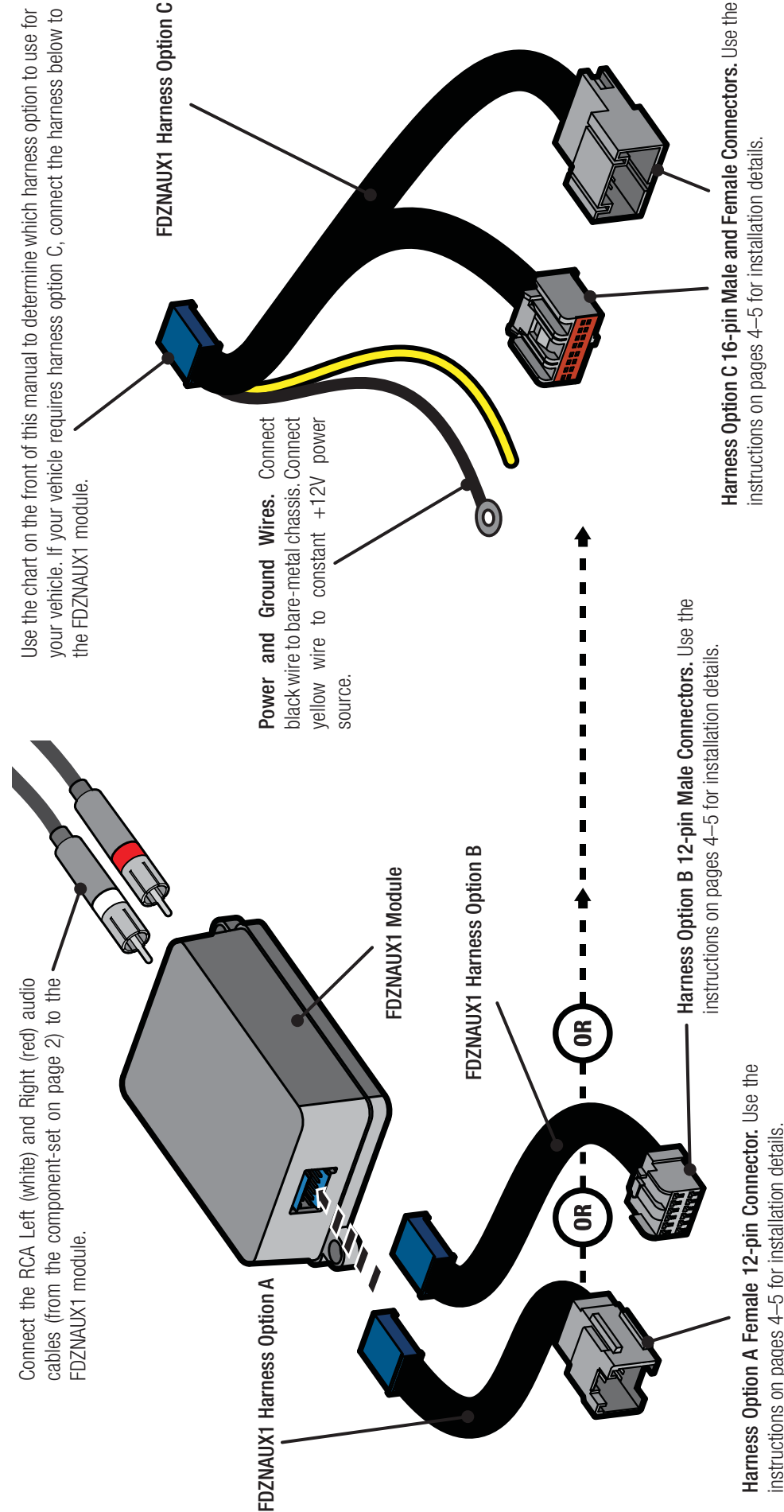
FDZNAUX1 Overview

RCA component A/V outputs. Connect the audio outputs to the matching locations of the FDZNAUX1 components on the next page.

Yellow = Video
 Red = Audio Right
 White = Audio Left



Inline fuse. The red wire of the power connector is fused to protect your Zune device and vehicle systems. This wire requires a 12V, 1500mA fuse.



BEFORE YOU BEGIN:

1. Turn the ignition off.
2. Ensure the factory radio is turned off.

Installation

STEP 1 Gain access to the factory radio's rear panel or CD changer location. The FDZNAUX1 connects directly to the rear panel of the factory radio or the factory CD changer cable. Refer to the factory service manual for details on where the pre-wired factory CD changer cable is located in your vehicle. Full or partial disassembly of the dash may be necessary. If you are unsure of this procedure, please consult a factory service manual or have the work performed by a mobile electronics specialist. Pay special attention to warnings or instructions regarding working near airbags, other safety devices, or security systems.

STEP 2 Connect the FDZNAUX1 harness to the factory radio or CD changer cable. The FDZNAUX1 comes with three vehicle-specific harnesses. Use the chart on the front page of this manual to determine which included harness to use for your vehicle. Harness options are shown on page 3. Only one of the harness options should be used.

Vehicles that require harness option A: Harness option A connects to the factory CD changer cable. Connect the female connector of harness option A into the matching male connector on the factory CD changer cable.

Vehicles that require harness option B: Harness option B connects to the CD changer port on the rear panel of the factory radio. Connect the male connector of harness option B into the matching factory CD changer port.

Vehicles that require harness option C: Disconnect the factory 16-pin connector from the rear panel of the factory radio. Replace this connector with the male connector of harness option C. Connect the factory connector you disconnected from the factory radio into the female connector of harness option C.

Harness option C has additional power and ground wires. Connect the black wire of this harness to a clean, bare-metal chassis ground. When in doubt, measure the resistance between potential grounding points and the vehicle battery using a multimeter. Choose a grounding point with equivalent resistance as other grounded components in the audio system. Connect the yellow wire to a constant +12V power source (vehicle battery). We **DO NOT** recommend the +12V constant in the factory radio harness due to the possibility of excessive voltage drop during vehicle starting.

STEP 3 Assemble the components shown on page 2 and connect them to the FDZNAUX1 module. Use the diagrams on pages 2-3 to assemble the components that will connect to and control your Zune device.

Power connector wiring. Connect the black wire of the power connector shown on page 3 to a clean, bare-metal chassis ground. When in doubt, measure the resistance between potential grounding points and the vehicle battery using a multimeter. Choose a grounding point with equivalent resistance as other grounded components in the audio system. Connect the red wire to a +12V switched (ignition) power source. This wire requires a 12V, 1500mA inline fuse. **MAKE CERTAIN THAT REPLACEMENT FUSES MATCH THESE SPECIFICATIONS.**

STEP 4 Mount all components. Mount the FDZNAUX1 module behind or under the dash (mounting hardware not included). Be careful not to drill into wiring or vehicle mechanisms. You are solely responsible for securely fastening the FDZNAUX1 in your vehicle. Make certain that wires and cables cannot be damaged by screws, clips, or sharp, exposed pieces of metal.

Ensure that the Zune dock connector is left in a convenient place for connection to your Zune device. Plug the Zune dock connector in straight. Do not insert the connector at an angle or wiggle the connector during insertion.

Controlling your Zune device

The FDZNAUX1 will not provide control of your Zune device unless you attach the optional remote, which is available separately. Please visit www.soundgate.com or your local mobile audio dealer for details on the FDZNAUX1 remote's availability.

Activating the FDZNAUX1

To activate the FDZNAUX1, select the CD changer function on your factory radio. Please refer to the factory radio operation manual that came with your vehicle for specific details on how to select the CD changer function.

IMPORTANT After installation, test for correct operation by following these steps:

1. Turn on the radio and press the **FM** button. Next, press the **CD** button to test for proper operation (make sure you have music playing on your Zune device).

*If at this point the radio displays **NO DJ** or **NO CDDJ**, do the following:*

2. Leave the radio on.
3. Disconnect the blue connector from the FDZNAUX1 module. Wait 30 seconds.
4. With the radio still on, reconnect the blue connector and press the **CD** button.



Why SoundGate Dealers have the edge...

The technologies used in today's vehicles are as sophisticated as any laptop computer. At SoundGate we believe these new technologies are full of opportunities for mobile electronic dealers across the nation. We make it a high priority to not only research these new systems, but to understand them and their impact on the aftermarket car audio industry. Armed with this knowledge, we are well equipped to help you integrate new components into these systems with our innovative, high-performance interfaces and unparalleled technical support.

Ask your autosound specialist about these other exciting SoundGate products...

- Auxiliary Input Interfaces and Docking Stations which allow you to input audio from MP3 Players, DVD/Video, Satellite Radio, and more to OEM and aftermarket car audio systems
- High-performance Radio Replacement
- Interfaces for seamlessly integrating new receivers or CD players into OEM audio systems
- Competition-Grade Interfaces for adding amplifiers
- Remote Audio Control Interfaces that let you control aftermarket receivers and CD players from your factory rear seat, or steering-wheel mounted audio controls.
- And many others!

Simple-fi.™

www.soundgate.com

Zune™ and the Zune™ logo are trademarks of the Microsoft group of companies.

Copyright© 2004-2008 SoundGate®. All Rights Reserved. SoundGate® is a registered trademark of Stillwater Designs, Inc. All other trademarks are the property of their respective owners.