

FDPDAUX1



Purpose

The SoundGate FDPDAUX1 lets you connect an Apple iPod directly to the factory radio in the vehicles listed below. The FDPDAUX1 supplies power, charges your iPod, and allows for remote control of most iPod functions via the REMCORE remote (sold separately).



Features

The SoundGate FDPDAUX1 utilizes sophisticated microprocessor control, ultra-reliable surface-mount construction, and advanced software design to flawlessly integrate with factory audio systems—this provides audio fidelity far superior to FM transmitters, tape-deck adapters, etc. Your iPod's audio can be selected directly from your factory radio's controls.

The FDPDAUX1 works in the following vehicles:

VEHICLE YEAR AUDIO SYSTEM USE INCLUDED HARNESS OPTION:

VEHICLE	YEAR	AUDIO SYSTEM	USE INCLUDED HARNESS OPTION:
FORD			
Crown Victoria	2003–05	CD capable	Harness C
Escort/ZX2 ²	1997–03	"Premium" system	Harness A
Expedition ¹	2003–05	CD capable	Harness C
Explorer ¹	2004–05	CD capable	Harness C
Focus ³	2000–04	CD capable	Harness B
Freestar	2004–05	CD capable	Harness C
Windstar	2003–05	CD capable	Harness C
LINCOLN			
Aviator ¹	2003–05	"Premium" system	Harness C
Blackwood ²	2002	See note ² below	Harness A
Navigator ¹	2003–04	CD capable	Harness C
Town Car	2003–05	CD capable	Harness C
MERCURY			
Cougar	1998–03	CD capable	Harness B
Grand Marquis	2003–05	CD capable	Harness C
Mountaineer	2004	"Premium" system	Harness C
JAGUAR			
S-Type	1999–01	CD capable	Harness B
S-Type ²	2002	See note ² below	Harness A

¹ vehicle cannot be equipped with rear seat entertainment package.
² vehicle must be pre-wired for a factory CD changer.
³ vehicle must not have Sony/Blaupunkt radio

Note: the FDPDAUX1 is **NOT** compatible with factory audio systems that are satellite-radio-ready.

Simple-fi.™

Check www.soundgate.com for the most current compatibility information.

www.soundgate.com

Rev 20080912

If you experience problems, call SoundGate Technical Support at +1-800-256-0808, or email us at support@soundgate.com.

WARNING

DO NOT DISASSEMBLE OR ALTER

Doing so may result in an accident, fire, or electric shock.

Do not block your view

Do not mount product or any added audio/video equipment where it can block your view through the windshield or block your view of dashboard indicators and displays.

Do not block safety devices

Do not mount product or any added audio/video equipment where it can obstruct the operation of any safety device, such as the airbag.

Distraction warning

Do not allow product or any added audio/video equipment to distract you while you are driving.

BEFORE WIRING, DISCONNECT THE CABLE FROM THE NEGATIVE BATTERY TERMINAL

Before starting any installation work, wait 90 seconds after turning the ignition switch to the LOCK position and disconnecting the negative (-) terminal from the battery. The supplemental restraint system (SRS), or airbag(s) is equipped with a backup power source. If installation work is started less than 90 seconds after disconnection of the negative (-) battery terminal, the SRS may deploy. When the negative (-) terminal cable is disconnected from the battery, the clock and audio systems' memory may be erased. Before starting installation work, make a record of the clock and audio systems' memory settings. When installation is complete, reset the clock and audio systems to their previous settings. Power tilt, power telescopic steering column, power seats, power mirrors, power shoulder belt anchorage, and other power accessories may or may not be equipped with a memory function; consider keeping a record of these settings as well.

When installation is complete, readjust the features to their previous settings.

Never use a backup power supply (such as another battery) during installation work in an attempt to avoid losing these memory settings.

CAUTION

DO NOT ALLOW CABLES TO BECOME ENTANGLED IN SURROUNDING OBJECTS

Cables or wiring that obstruct or get caught on places such as the steering wheel, shift lever, brake pedals, etc. can be extremely hazardous.

DO NOT INSTALL IN LOCATIONS WITH HIGH MOISTURE OR DUST

Moisture or dust may result in product failure.

HAVE THE WIRING AND INSTALLATION DONE BY EXPERTS

The wiring and installation of this product requires special technical skills and experience.

USE ONLY SPECIFIED ACCESSORY PARTS

Use of other than specified parts may damage product internally.

FOLLOW THE OPERATIONAL AND INSTALLATION MANUALS.

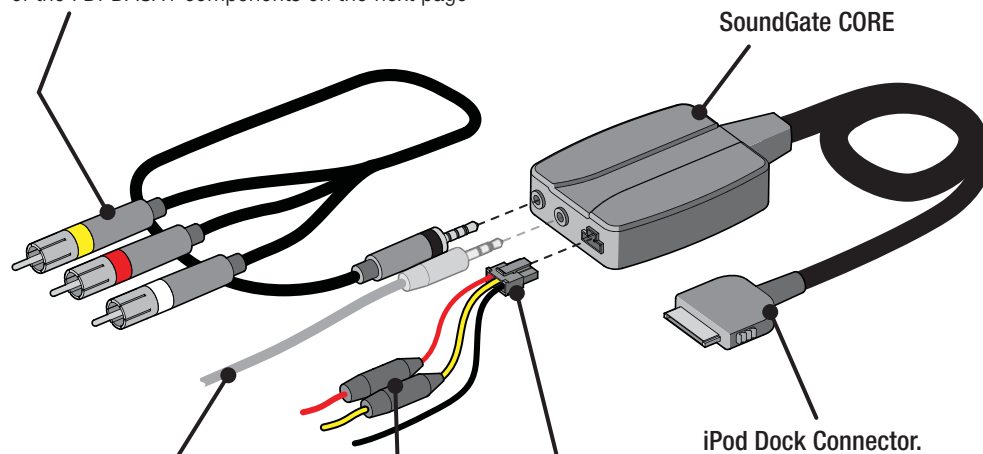
YOU SHOULD READ AND FAMILIARIZE YOURSELF THOROUGHLY WITH THE FOLLOWING INFORMATION PRIOR TO INSTALLING AND USING THIS UNIT. IN ADDITION, YOU MUST CAREFULLY READ AND FOLLOW THE INSTALLATION SCHEMATICS AND INSTRUCTIONS FOR THE PRODUCT AND THE VEHICLE IN WHICH IT IS BEING INSTALLED. FAILURE TO FOLLOW INSTALLATION INSTRUCTIONS MAY DAMAGE THE PRODUCT AND THE VEHICLE, WILL VOID THE PRODUCT WARRANTY, AND MAY VOID THE VEHICLE WARRANTY.

TROUBLESHOOTING

Should this product fail to operate properly, please contact your Dealer or SoundGate Technical Support via email at sgtech@soundgate.com or via phone at +1-800-256-0808.

FDPDAUX1 Overview

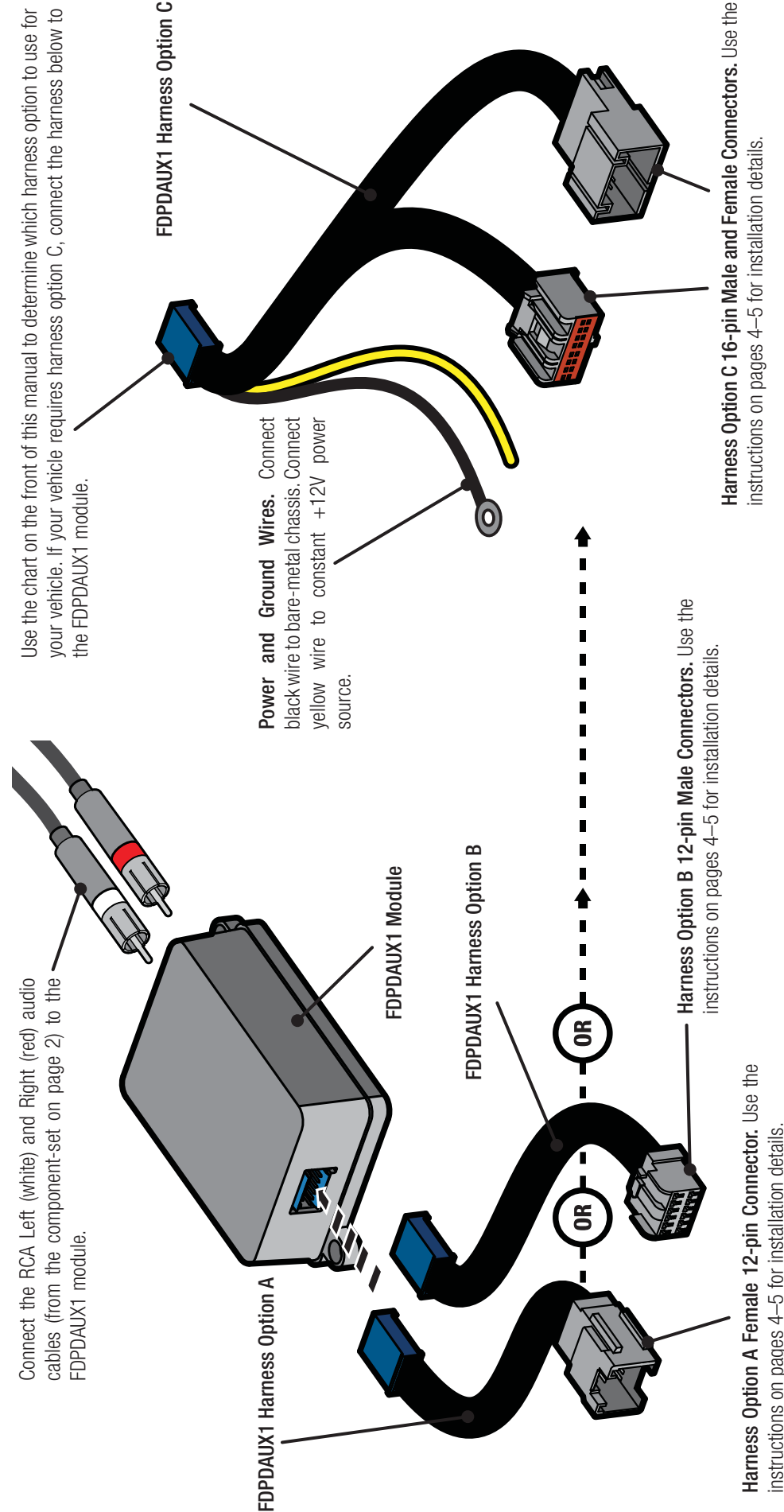
RCA component A/V outputs. Yellow = Video, Red = Audio Right, White = Audio Left. Connect the audio outputs to the matching locations of the FDPDAUX1 components on the next page



Optional REMCORE remote (available separately). Allows full control of a connected iPod's functions

Power connector. Connect black wire to bare-metal chassis ground. Connect red wire to a +12V switched (ignition) power source. Connect the yellow wire to a +12V constant power source.

Inline fuses. The red and yellow wires of the power connector are fused to protect your iPod and vehicle systems. The red wire requires a 12V, 500mA fuse. The yellow wire requires a 12V, 1 ampere fuse.



Use the chart on the front of this manual to determine which harness option to use for your vehicle. If your vehicle requires harness option C, connect the harness below to the FDPDAUX1 module.

Power and Ground Wires. Connect black wire to bare-metal chassis. Connect yellow wire to constant +12V power source.

Connect the RCA Left (white) and Right (red) audio cables (from the component-set on page 2) to the FDPDAUX1 module.

Harness Option C 16-pin Male and Female Connectors. Use the instructions on pages 4–5 for installation details.

Harness Option B 12-pin Male Connectors. Use the instructions on pages 4–5 for installation details.

Harness Option A Female 12-pin Connector. Use the instructions on pages 4–5 for installation details.

BEFORE YOU BEGIN:

1. Turn the ignition off.
2. Ensure the factory radio is turned off.

Installation

STEP 1 Gain access to the factory radio's rear panel or CD changer location. The FDPDAUX1 connects directly to the rear panel of the factory radio or the factory CD changer cable. Refer to the factory service manual for details on where the pre-wired factory CD changer cable is located in your vehicle. Full or partial disassembly of the dash may be necessary. If you are unsure of this procedure, please consult a factory service manual or have the work performed by a mobile electronics specialist. Pay special attention to warnings or instructions regarding working near airbags, other safety devices, or security systems.

STEP 2 Connect the FDPDAUX1 harness to the factory radio or CD changer cable. The FDPDAUX1 comes with three vehicle-specific harnesses. Use the chart on the front page of this manual to determine which included harness to use for your vehicle. Harness options are shown on page 3. Only one of the harness options should be used.

Vehicles that require harness option A: Harness option A connects to the factory CD changer cable. Connect the female connector of harness option A into the matching male connector on the factory CD changer cable.

Vehicles that require harness option B: Harness option B connects to the CD changer port on the rear panel of the factory radio. Connect the male connector of harness option B into the matching factory CD changer port.

Vehicles that require harness option C: Disconnect the factory 16-pin connector from the rear panel of the factory radio. Replace this connector with the male connector of harness option C. Connect the factory connector you disconnected from the factory radio into the female connector of harness option C.

Harness option C has additional power and ground wires. Connect the black wire of this harness to a clean, bare-metal chassis ground. When in doubt, measure the resistance between potential grounding points and the vehicle battery using a multimeter. Choose a grounding point with equivalent resistance as other grounded components in the audio system. Connect the yellow wire to a constant +12V power source (vehicle battery). We **DO NOT** recommend the +12V constant in the factory radio harness due to the possibility of excessive voltage drop during vehicle starting.

STEP 3 Assemble the components shown on page 2 and connect them to the FDPDAUX1 module. Use the diagrams on pages 2–3 to assemble the components that will connect to and control your iPod.

Power connector wiring. Connect the black wire of the power connector shown on page 3 to a clean, bare-metal chassis ground. When in doubt, measure the resistance between potential grounding points and the vehicle battery using a multimeter. Choose a grounding point with equivalent resistance as other grounded components in the audio system. Connect the red wire to a +12V switched (ignition) power source. Connect the yellow wire to a +12V constant power source. The red wire requires a 12V, 500mA inline fuse; the yellow wire requires a 12V, 1 ampere fuse. **MAKE CERTAIN THAT REPLACEMENT FUSES MATCH THESE SPECIFICATIONS.**

STEP 4 Mount all components. Mount the FDPDAUX1 module behind or under the dash (mounting hardware not included). Be careful not to drill into wiring or vehicle mechanisms. You are solely responsible for securely fastening the FDPDAUX1 in your vehicle. Make certain that wires and cables cannot be damaged by screws, clips, or sharp, exposed pieces of metal.

Ensure that the iPod dock connector is left in a convenient place for connection to your iPod. Plug the dock connector in straight. Do not insert the connector at an angle or wiggle the connector during insertion.

iPod Details

The FDPDAUX1 works with any 3rd generation and newer iPod with a dock connector, including the iPod Touch and iPhone.

iPod Charging

While the ignition is turned on, the CORE charges your iPod. Once the ignition is turned off, the CORE pauses the iPod, charges it for 10 minutes, then puts the iPod into sleep mode.

Controlling your iPod

The FDPDAUX1 will not provide control of your iPod unless you attach the optional REMCORE remote, which is available separately. Please visit www.soundgate.com or your local mobile audio dealer for details on REMCORE availability.

Activating the FDPDAUX1

To activate the FDPDAUX1, select the CD changer function on your factory radio. Please refer to the factory radio operation manual that came with your vehicle for specific details on how to select the CD changer function.

IMPORTANT After installation, test for correct operation by following these steps:

1. Turn on the radio and press the **FM** button. Next, press the **CD** button to test for proper operation (make sure you have music playing on your iPod).

*If at this point the radio displays **NO DJ** or **NO CDDJ**, do the following:*

2. Leave the radio on.
3. Disconnect the blue connector from the FDPDAUX1 module. Wait 30 seconds.
4. With the radio still on, reconnect the blue connector and press the **CD** button.

Troubleshooting

To activate the iPod's video output (for iPod's that support TV Out):

1. Go to Videos > Settings.
2. Set the **TV Out** option to **Ask** or **On**.
3. Adjust the **TV Signal** and **TV Screen** options to match your video input device.

If your iPod is frozen or will not turn on, try resetting your iPod, using these instructions:

1. Toggle the **Hold** switch on, then off.
2. Press and hold the **Menu** and **Center** buttons simultaneously until the Apple logo appears. On older iPods, press the **Play/Pause** and **Menu** buttons. On the iPod Touch and iPhone, press the **Menu** and **Sleep** buttons.
3. If you're still having problems, you may need to recharge your iPod with a wall charger or your computer.
4. If your iPod won't mount on your computer or take a charge, the battery may need to be completely drained. Put the iPod aside for 24 hours, then try charging again.

Troubleshooting continued

If your iPod's battery has completely drained:
Connect the iPod to a wall charger or your computer as soon as possible and perform a full charge. If the iPod will not charge, try the reset method above.

If you have further iPod battery, charging, or other problems, contact Apple tech support.



Why SoundGate Dealers have the edge...

The technologies used in today's vehicles are as sophisticated as any laptop computer. At SoundGate we believe these new technologies are full of opportunities for mobile electronic dealers across the nation. We make it a high priority to not only research these new systems, but to understand them and their impact on the aftermarket car audio industry. Armed with this knowledge, we are well equipped to help you integrate new components into these systems with our innovative, high-performance interfaces and unparalleled technical support.

Ask your autosound specialist about these other exciting SoundGate products...

- Auxiliary Input Interfaces and Docking Stations which allow you to input audio from MP3 Players, DVD/Video, Satellite Radio, and more to OEM and aftermarket car audio systems
- High-performance Radio Replacement
- Interfaces for seamlessly integrating new receivers or CD players into OEM audio systems
- Competition-Grade Interfaces for adding amplifiers
- Remote Audio Control Interfaces that let you control aftermarket receivers and CD players from your factory rear seat, or steering-wheel mounted audio controls.
- And many others!

Simple-fi.™

www.soundgate.com

iPod is a trademark of Apple Computer, Inc., registered in the U.S. and other countries.

Copyright© 2004-2008 SoundGate®. All Rights Reserved. SoundGate® is a registered trademark of Stillwater Designs, Inc. All other trademarks are the property of their respective owners.